

**RECLAMATION DISTRICT NO. 1601
TWITCHELL ISLAND
BOARD OF TRUSTEES MEETING
TUESDAY, NOVEMBER 19, 2024
9:00 AM
ENGINEER'S REPORT**

I. LEVEE DISTRESS AT LEVEE STATION 60+00 ALONG THREE MILE SLOUGH

- A. Asta Construction's first Phase of work was from 10/16/2024 to 10/22/2024.
 - a) Split the site into 5 work areas.
 - b) Excavated existing fill material and stockpiled for reuse. Removed the top layer of existing fabric.
 - c) Excavated existing drain rock (up to 5' thick). Removed the bottom layer of existing fabric.
 - d) Placed new filter sand (1' – 3' thick) and new drain rock (±2' thick).
 - e) Let things settle for 6 days.
- B. Asta Construction's second Phase of work was from 10/28/2024 to 11/2/2024.
 - a) Filled in a little drain rock at sinkhole location where up to 6" of consolidation had occurred.
 - b) Placed new fabric.
 - c) Placed fill material (±2.5' thick) from stockpile and then supplemented with import fill material.
- C. Final costs from Asta are not in yet, but it is estimated at \$300k.
- D. We still are experiencing ongoing seepage at a boil in the toe ditch. The boil is still carrying small amounts of material but appears to generally be clearer than when we began the work.
- E. ENGEO the District's Geotechnical Engineer performed 5 Cone Penetrometer Tests (CPTs) to evaluate the strata layers and gain a better understanding of where the sand lenses are, particularly if there is a deeper sand lens that is contributing to the boil. Awaiting results.

EXHIBIT A: Field photography from KSN Inc's Daily Field Reports.

II. PROJECT FUNDING AGREEMENT TW – 24 - 1.0 SP – PHASE I – SETBACK LEVEE SAN JOAQUIN RIVER

- A. We received comments from CDFW on 10/31/2024 regarding our Scope of Work submitted on 8/24/2024.
- B. Still awaiting Scope of Work comments from DWR.
- C. Attached is the updated schedule.

EXHIBIT B: Updated Schedule for Reach 6 Phase I Setback Levee.

III. DISTRICT PUMP STATION SOLAR ARRAY

- A. KSN has received required construction bonds and insurance certificates from the contractor, Panelized Structures Inc. (PSI) – Contract Executed.
- B. PG&E is requesting a new 750-kVA pad mounted transformer and service meter installed above the floodplain.
- C. Barry Sgarrella, Ch. working with PG&E to see if they will accept the more appropriately sized 500-kVA transformer.
- D. Precision Build USA (structural engineer) is currently working to design an elevated steel platform to raise the transformer above the 100-yr floodplain.
- E. ENGEO, the District's Geotechnical Engineer, will be conducting a single CPT at proposed site to support the platform foundation design.
- F. The District's Electrical Engineer Cecil & Cecil is in the process of revising design to relocate meter panel and new main disconnect to the new platform.
- G. Panelized Structures Inc. (PSI) has reviewed the project and prepared a Value Engineering Change Proposal (VECP) to cut project costs and maximize available product rebates.
- H. Panelized Structures will not have the VECP prepared until Monday 11/18 – as a result the KSN Inc. will provide the VECP in-person for Board consideration and authorization.
- I. The Sacramento County Building Permit is expected soon.
- J. Awaiting approval on electrical plan updates in response to Sacramento County review which is the final step before permit issuance.

IV. OWL HARBOR DEVELOPMENT PLAN

- A. Review of the consideration of new development plan for Owl Harbor. Owl Harbor Complex is "FOR SALE" and a prospective developer is seeking preliminary comments on transitioning the land-based portion of the marina into a RV Park.

EXHIBIT A



Began construction on Oct 16. Peeling off existing dirt and top layer of existing fabric to expose existing drain rock.



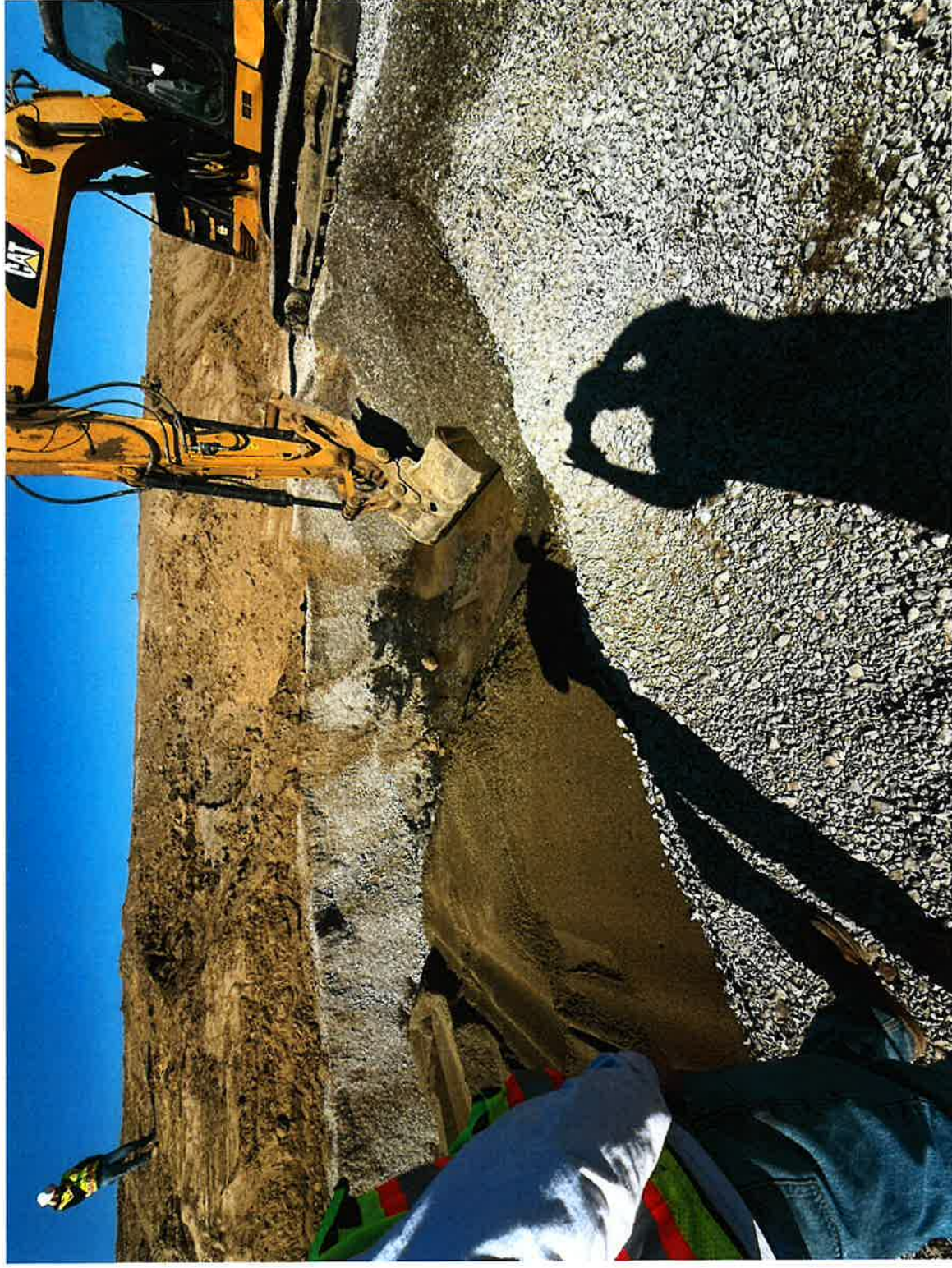


Removing existing drain rock and bottom layer of existing fabric.





Placing new filter sand and drain rock.



Removing existing drain rock and bottom layer of existing fabric. Placing new filter sand.



Removing existing drain rock and bottom layer of existing fabric.



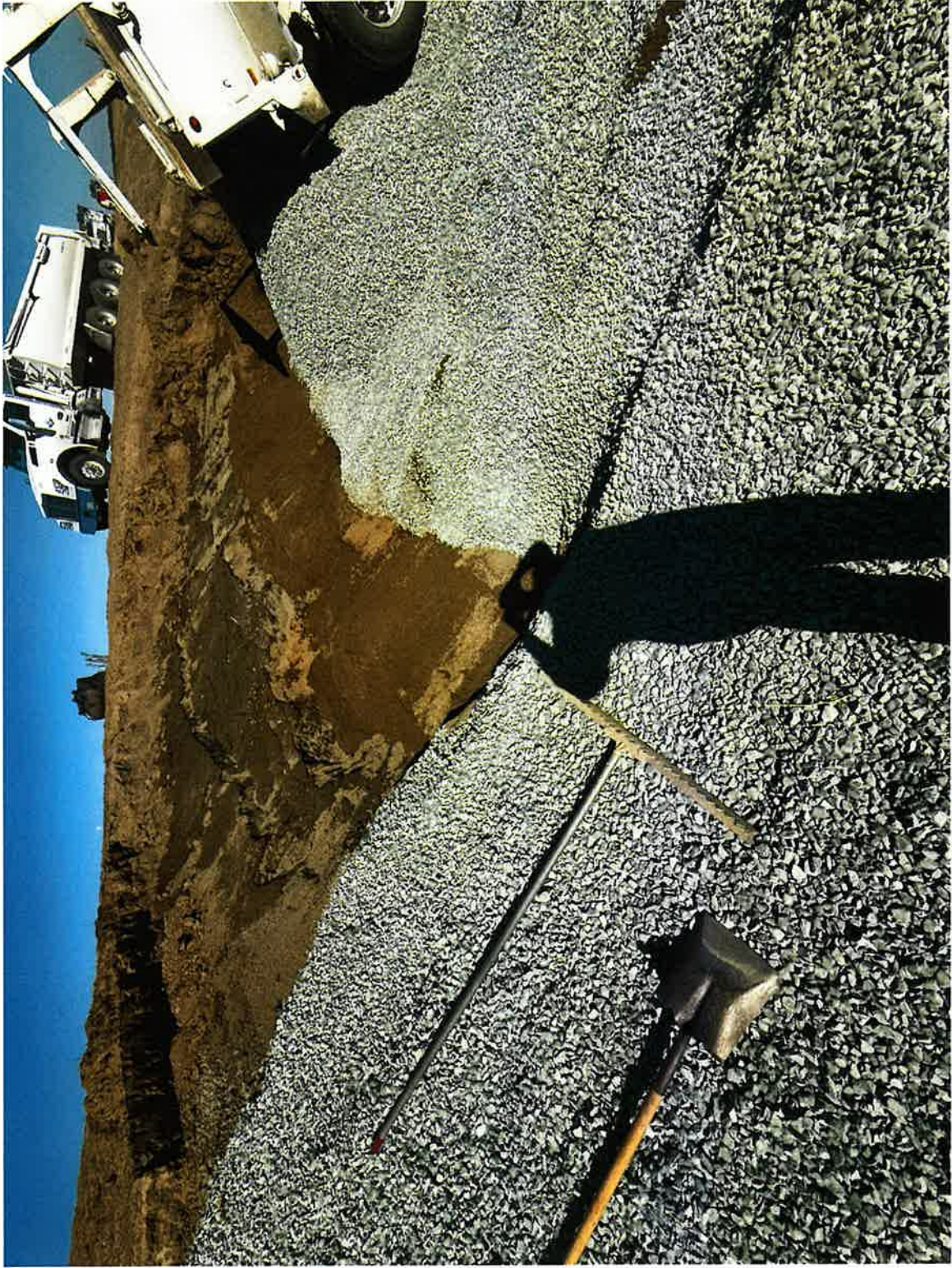
All existing drain rock and bottom layer of existing fabric on second pass have been removed. Placing new filter sand and drain rock.



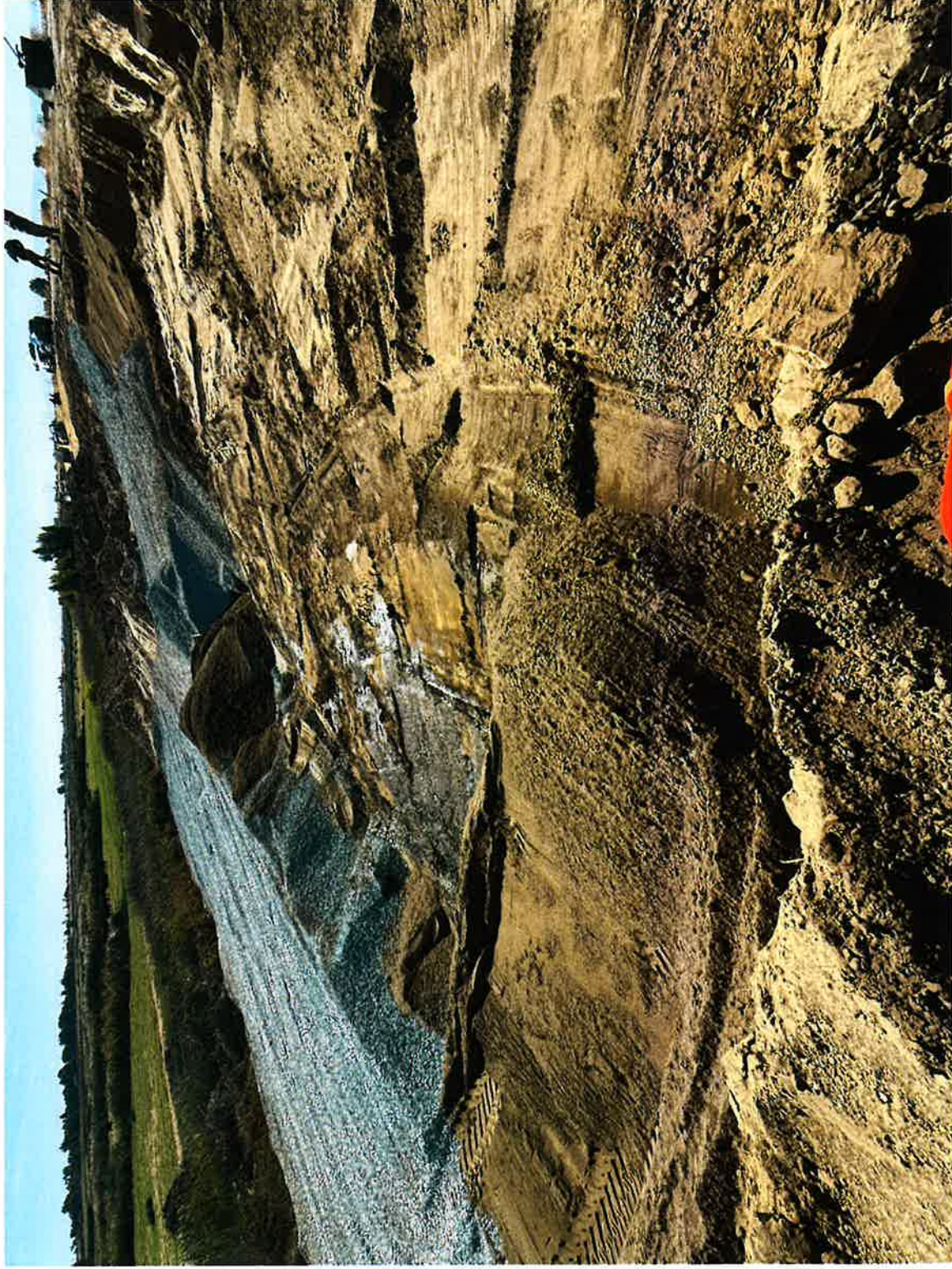
Peeling off existing dirt and top layer of existing fabric to expose existing drain rock at levee slope.



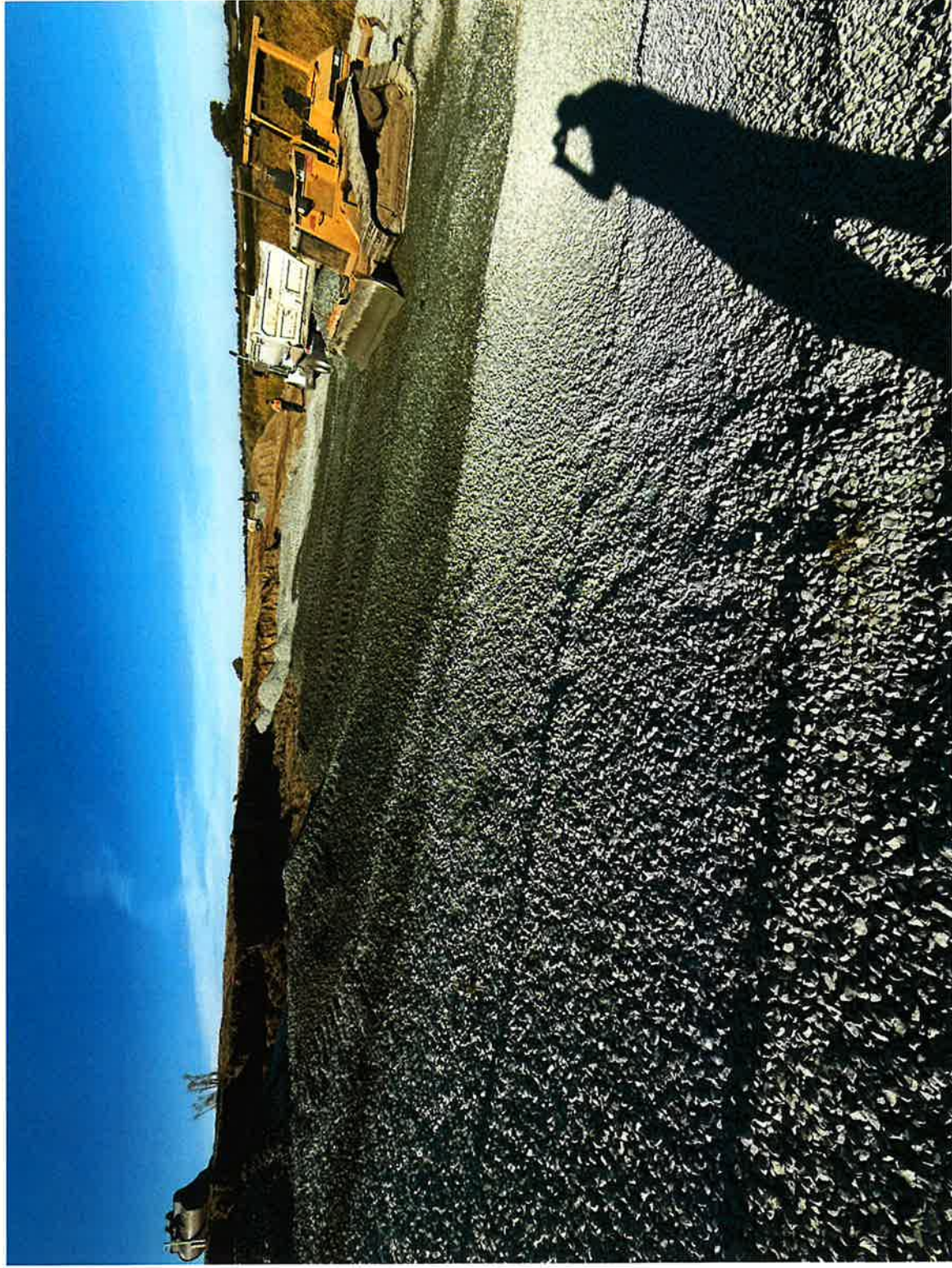
Placing new filter sand and drain rock at levee slope.



Placing new filter sand and drain rock at levee slope at sinkhole location.



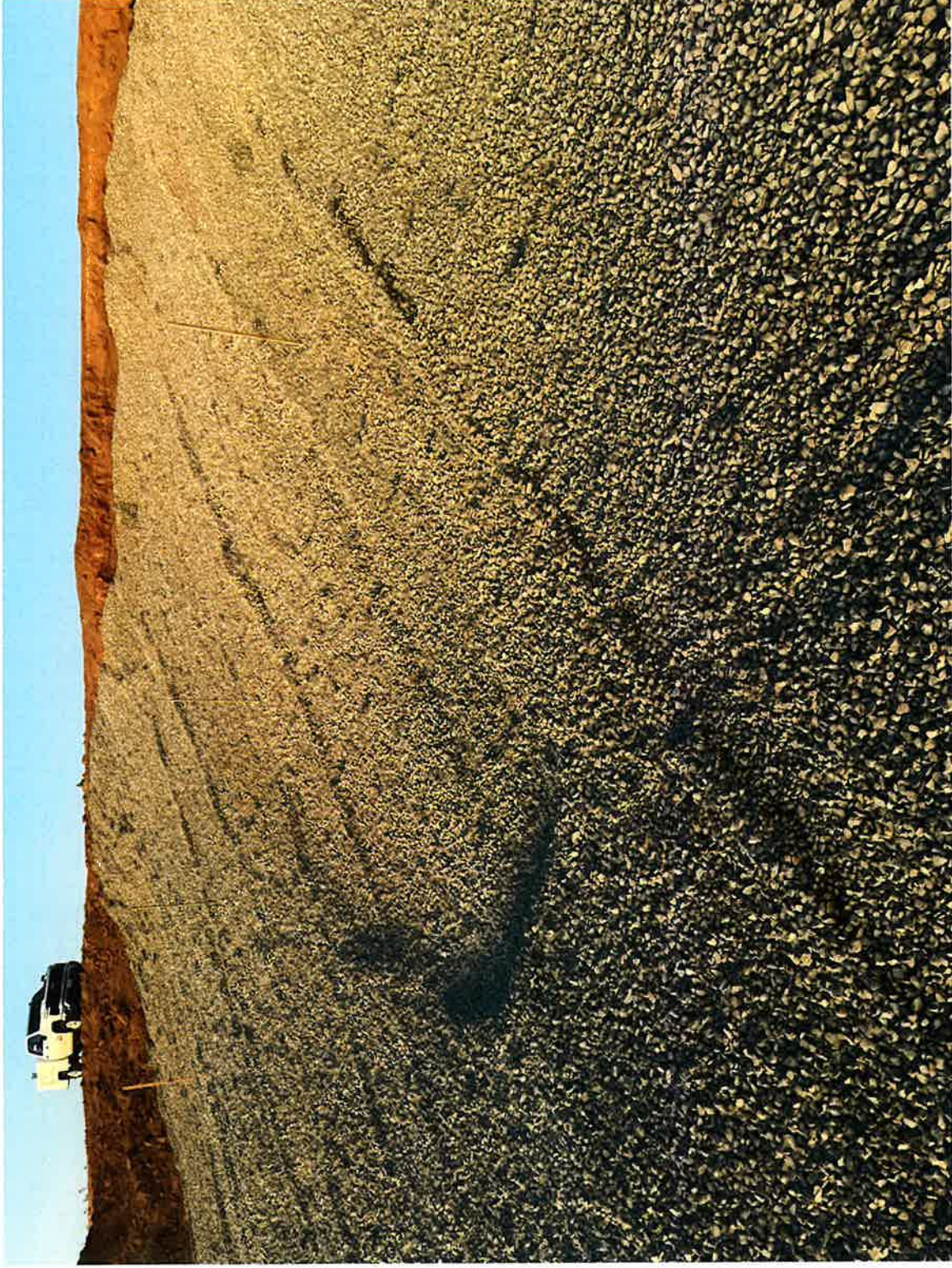
All existing drain rock and bottom layer of existing fabric on the remainder of the levee slope have been removed. Placing new filter sand.



Placing new drain rock on the remainder of the levee slope.



All new drain rock has been placed.



Up to 6 inches of consolidation at sinkhole location over 6 days (Oct 22 – Oct 28).





Placing new fabric and fill material.



Placing fill material.



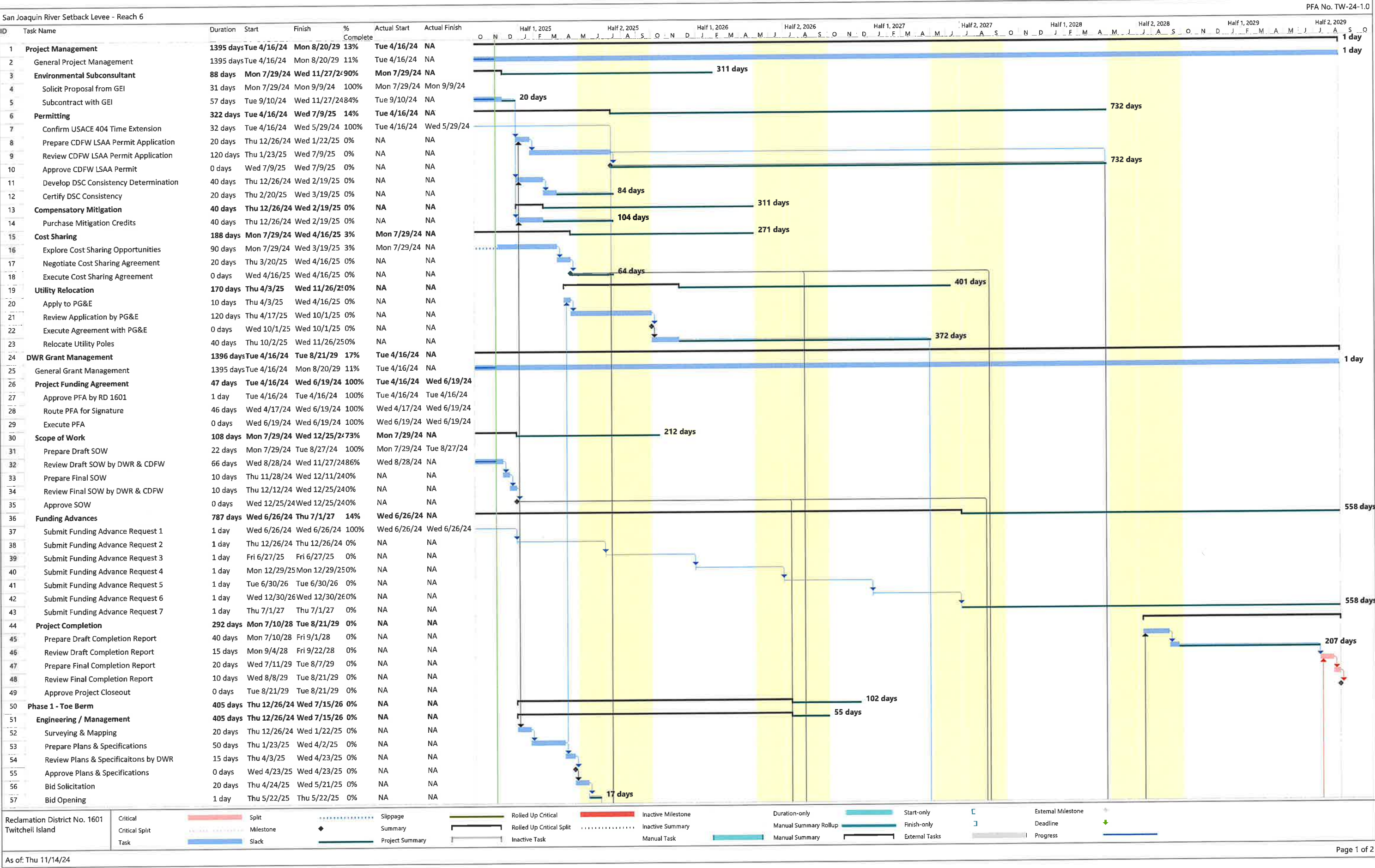
Completed project on Nov 2.



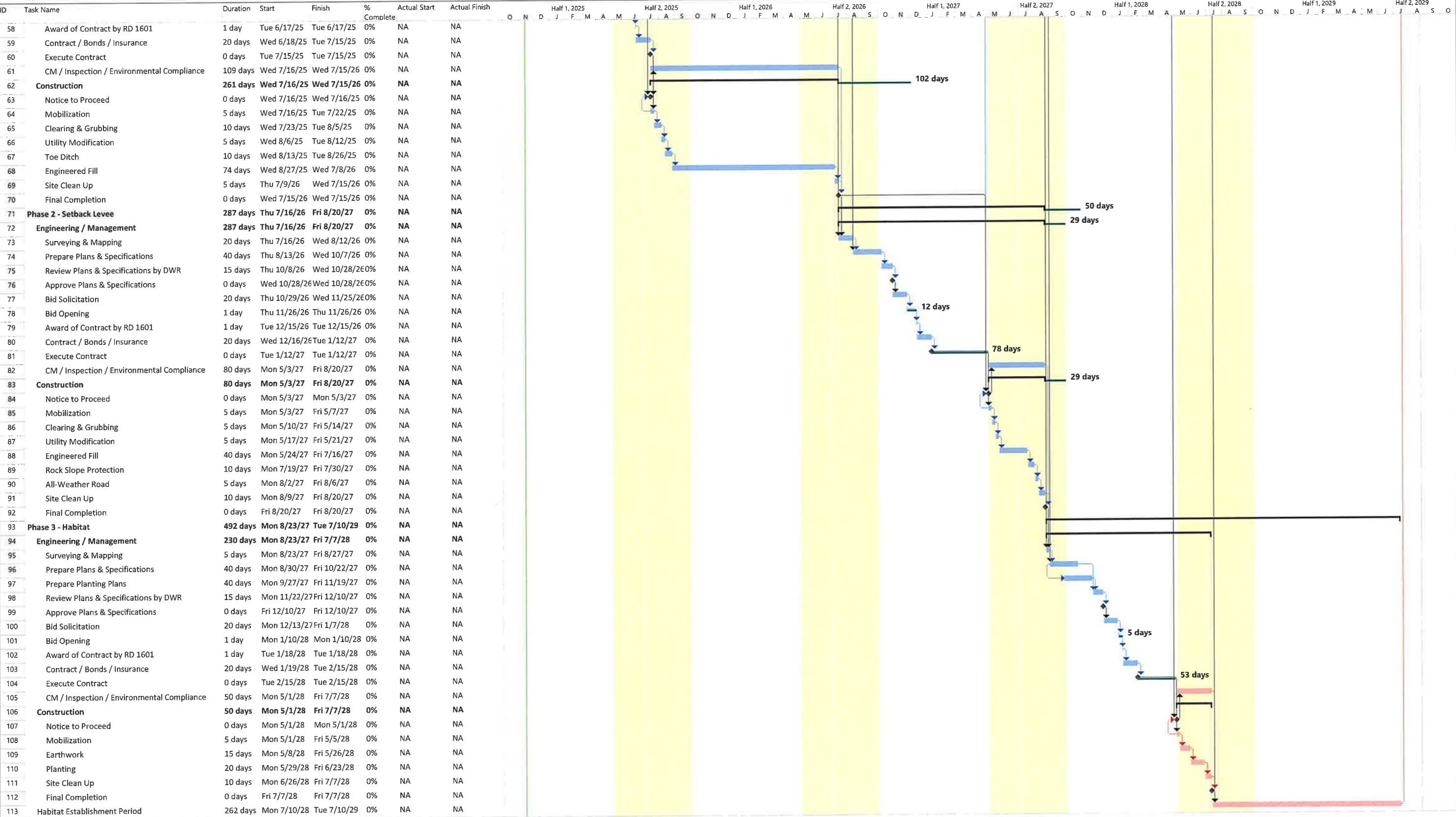


Completed project on Nov 2.

EXHIBIT B



San Joaquin River Setback Levee - Reach 6



Reclamation District No. 1601
Twitchell Island

Critical

Critical Split

Task

Split

Milestone

Slack

Slippage

Summary

Project Summary

Rolled Up Critical

Rolled Up Critical Split

Inactive Task

Inactive Milestone

Inactive Summary

Manual Task

Duration-only

Manual Summary Rollup

Manual Summary

Start-only

Finish-only

External Tasks

External Milestone

Deadline

Progress